

Metal Blade Probes

METAL BLADE PROBES

Accuprobe offers a wide selection of metal blade probes for semiconductor, hybrid circuit and laser trim applications. Blade probes are compatible with most probe card assembly machines and provide a stable and repairable solution for device test. Profiles to suit both hybrid and semiconductor applications are available in many standard working depths.

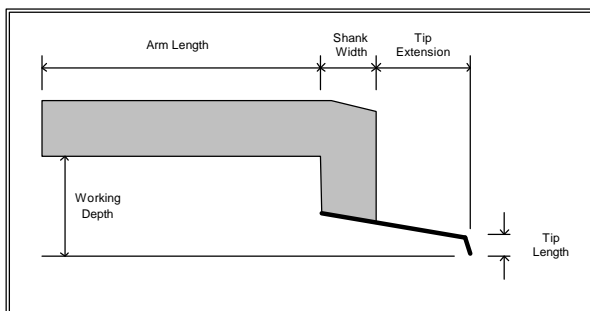
A unique feature of a number of Accuprobe metal blades is that the longer varieties may be shortened during assembly to more flexibly probe diverse device pad arrangements. Customers using the M or L versions of these metal blades only need to stock one item in inventory to meet short and long reach applications.

Accuprobe's metal blades can accommodate a diverse set of needles from 6 to 15 mils in diameter. Standard as well as custom tip extensions, tip lengths, bend angles and tip shapes may be specified.

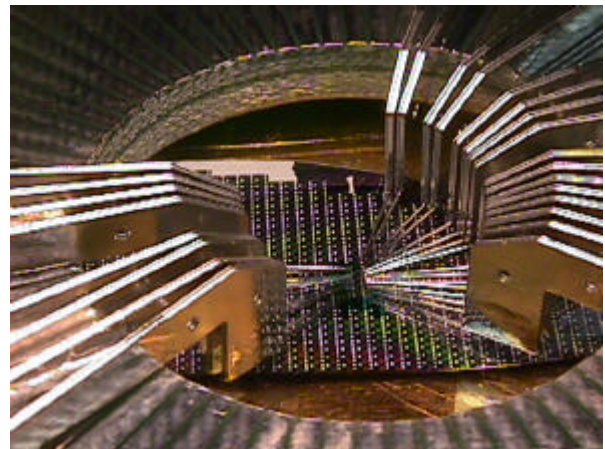
BLADE SELECTION AND ORDERING







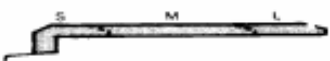
Select your metal blade style from the table that follows. A typical model number is BAMW3AF meaning:

- BA Small blade 144 mil working depth
- M Medium 552 mil arm length
- W Tungsten 10 mil needle
- 3A 1.5 mil tip diameter, 8 mil tip drop
- F Flat tip shape



Blade Geometry



| | |
|-------------------|---|
| BA & H |  144 MILS TYP (3.658 mm) |
| BB |  244 MILS TYP (6.198 mm) |
| BC |  317 MILS TYP (8.052 mm) |
| BD |  317 MILS TYP (8.052 mm) |
| BE |  .472 MILS TYP (12 mm) |
| BF |  1.080 MILS TYP (27.43 mm) |
| BG |  244 MILS TYP (6.198 mm) |

Probing the World
of Microelectronics

Metal Blade Probes

| Profile | Size | Working Depth | Blade Thickness | Arm Length | Shank Width | Tip Extension | Tip Length |
|---------|------|---------------|-----------------|------------|-------------|---------------|------------|
| BA | S | 144 | 15 | 378 | 152 | 200 | 8 |
| BA | M | 144 | 15 | 552 | 152 | 200 | 8 |
| BA | L | 144 | 15 | 1000 | 152 | 200 | 8 |
| BB | S | 244 | 20 | 452 | 180 | 250 | 15 |
| BB | M | 244 | 20 | 1710 | 180 | 250 | 15 |
| BB | L | 244 | 20 | 2320 | 180 | 250 | 15 |
| BC | S | 317 | 20 | 452 | 180 | 250 | 8 |
| BC | M | 317 | 20 | 1370 | 180 | 250 | 8 |
| BC | L | 317 | 20 | 2320 | 180 | 250 | 8 |
| BD | L | 317 | 32 | 2125 | 500 | 250 | 8 |
| BE | L | 472 | 32 | 2335 | 165 | 250 | 60 |
| BF | L | 1080 | 32 | 2310 | 190 | 250 | 60 |
| BG | S | 244 | 20 | 452 | 180 | 250 | 8 |
| BG | M | 244 | 20 | 1710 | 180 | 250 | 8 |
| BG | L | 244 | 20 | 2320 | 180 | 250 | 8 |
| BH | S | 144 | 15 | 347 | 143 | 230 | 15 |

*all sizes in mils

Blade Selection Table

| Type | Profile | Body Length | | | | Needle Material Diameter | | Tip Diameter "A" | | Tip Drop "B" | | Tip Shape | |
|-------------------|--------------------|-------------|---|---|----|--------------------------|-----------------|------------------|------------------|-----------------|-----------------|-----------|--------|
| B Metal blade | A | S | M | L | A | Tungsten | .006" (.152mm) | 1* | .0005" (.0127mm) | A | .008" (.2032mm) | F | Flat |
| | B | S | M | L | W | Tungsten | .010" (.254mm) | 2 | .001" (.0254mm) | B | .015" (.381mm) | R | Radius |
| | C | S | M | L | WR | Tungsten Rh | .010" (.254mm) | 3 | .0015" (.0381mm) | C | .030" (.762mm) | | |
| | D | | | L | D | BeCu | .010" (.254mm) | 4 | .002" (.0508mm) | D | .060" (1.524mm) | | |
| | E | | | L | HD | Hard BeCu | .010" (.254mm) | 5 | .0025" (.0635mm) | | | | |
| | F | | | L | P | Palladium | .010" (.254mm) | 6 | .0035" (.0889mm) | | | | |
| | G | S | M | L | E | Tungsten | .012" (.3048mm) | 7 | .005" (.127mm) | | | | |
| | H | S | | | ER | Tungsten Rh | .012" (.3048mm) | 8 | .010" (.254mm) | | | | |
| C Ceramic blade | Ceramic types only | | | | | C | BeCu | .012" (.3048mm) | 9 | .012" (.3048mm) | | | |
| | 1 | S | M | | HC | Hard BeCu | .012" (.3048mm) | 10 | .015" (.381mm) | | | | |
| | 2 | S | M | | T | Tungsten | .015" (.381mm) | | | | | | |
| | 3 | S | M | | TR | Tungsten Rh | .015" (.381mm) | | | | | | |
| | 4 | S | M | | B | BeCu | .015" (.381mm) | | | | | | |
| | 5 | S | M | | HB | Hard BeCu | .015" (.381mm) | | | | | | |
| | Z1 | S | M | | | | | | | | | | |
| | Z2 | S | M | | | | | | | | | | |

Notes:
1 BeCu not available in .0005" tip.
2 Not all combinations of tip material, Tip Drop "B", and tip diameter "A", are possible.

BITA ELECTRONIQUE S.A.
45 Rte d'Arlon
LU-1140 LUXEMBOURG VILLE, Gr. D. Luxembourg
Ph. +352 450010
Fx. +352 332643
nfo@bita.lu - www.bita.lu



©2002 Accuprobe, Inc. Specifications may change without notice.
Accuprobe and the Accuprobe logo are trademarks of Accuprobe, Inc.